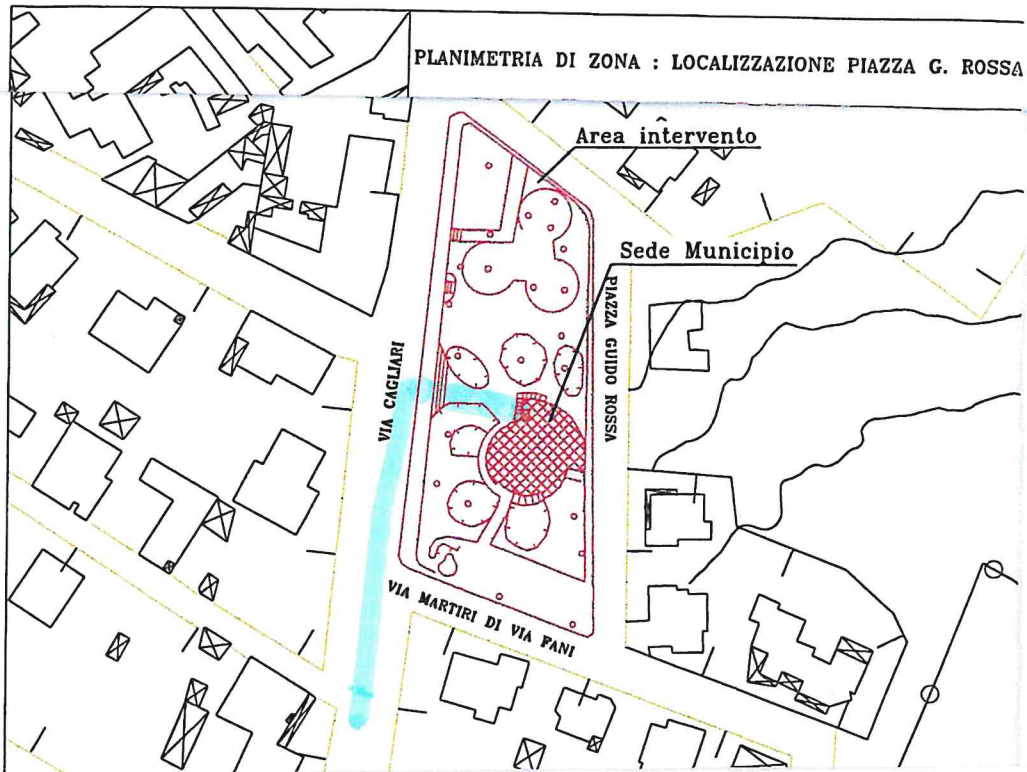
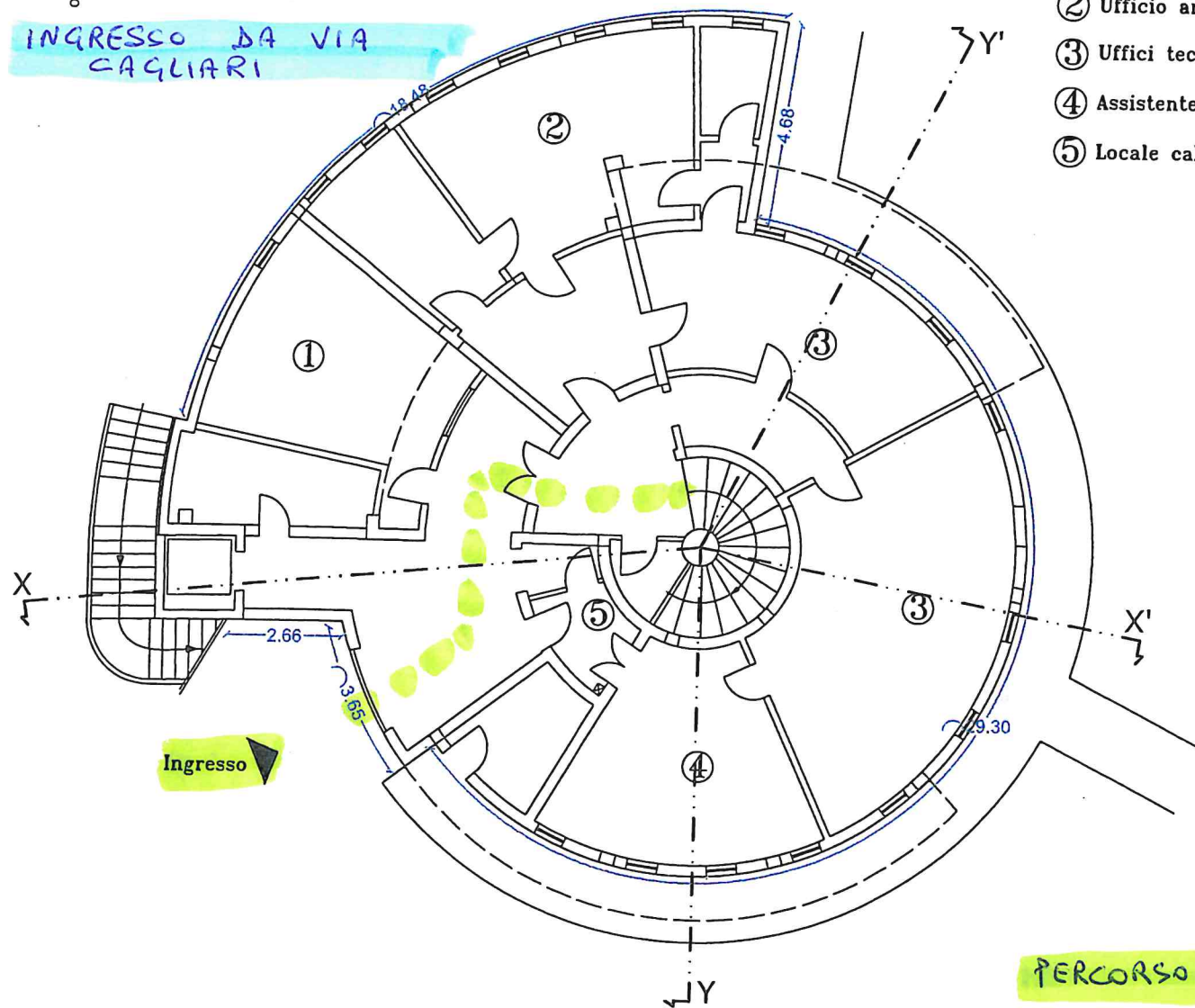


# PIANTA DEI LOCALI



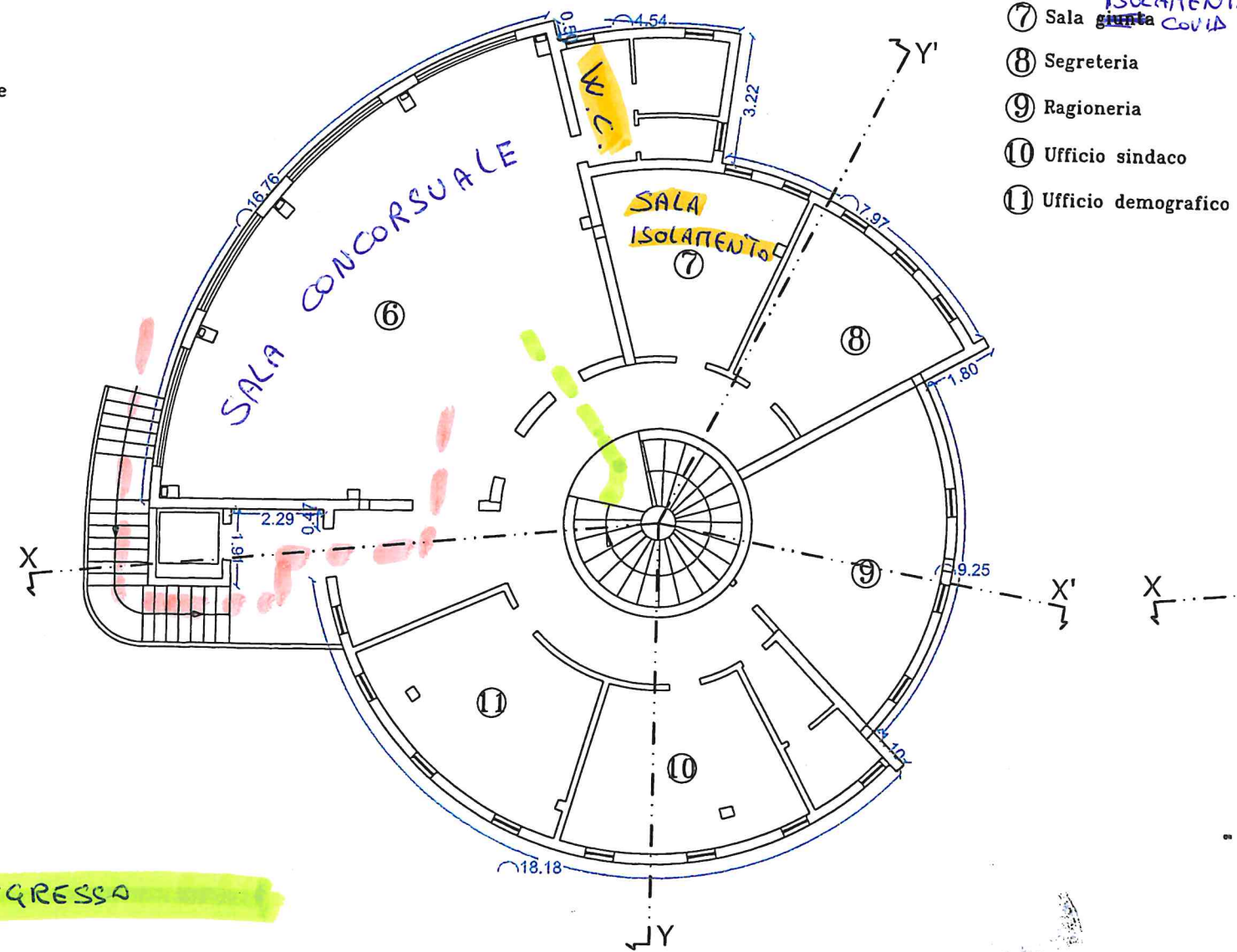
INGRESSO DA VIA CAGLIARI



PERCORSO INGRESSO

PERCORSO USCITA

- ⑥ Sala consiliare
- ⑦ Sala <sup>ISOLAMENTI</sup> giunta COVID
- ⑧ Segreteria
- ⑨ Ragioneria
- ⑩ Ufficio sindaco
- ⑪ Ufficio demografico



Pianta Piano Primo